

POWERFIT SINGLE POLE CONNECTOR

750A

PANEL DRAIN

KUPO[®]

Features

- * Brass contact with silver plating ensures excellent conductivity
- * Ergonomic rubber grip enhances handling comfort and safety
- * Durable thermoplastic body offers superior impact resistance and electrical insulation
- * O-ring provides an excellent protection against water and dust ingress after mating



Item Number: PFPD-1BN-T7

Phase: Line 1

Color: Brown

Type: Threaded post



Type Approved
Safety
Regular Production
Surveillance

www.tuv.com
ID 1111304988

Material Information

Connector Body: Non-conductive high impact-resistant thermoplastic

Contact Material: Copper (silver-plated)

O-Ring: Silicone

Nut & Washer: Brass & Phosphor Bronze

Electrical Information

Amperage Rating: 750A Maximum

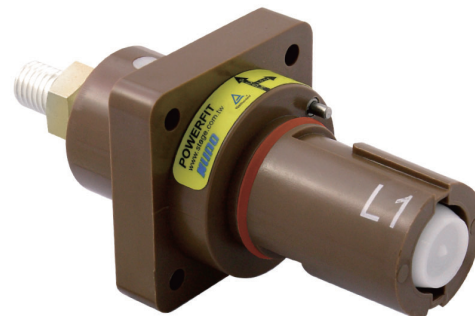
Voltage Rating: 1000V AC, 1500V DC Maximum

Test Voltage: 4500V AC

Short Circuit Rating: Up to 35.5kA

Insulation Resistance: > 5000M Ohms at 500V AC

Contact Resistance: 0.1m Ohms



Mechanical Information

Contact Type: M12 threaded post

Nut Torque: Maximum 12-14 N/meter

Connection Type: Push-and-twist

Mating Cycle: 500

Environmental Information

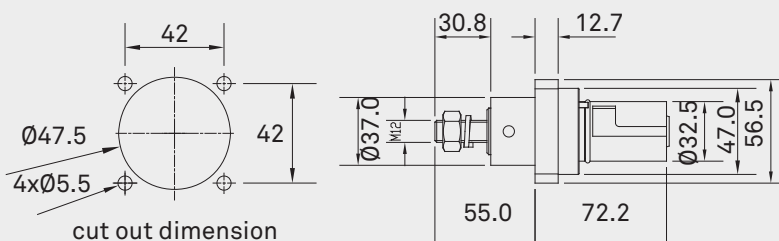
Ingress Protection: IP67 rating while mated

Flammability: UL94-V0 (body material rating)

Working Temperature: 45 to 85 Celsius Degree

Certifications: TÜV, CE, RoHS and REACH compliant

Dimensions



unit : mm

- Specifications subject to change without notice.
- www.stage.com.tw

2026 V1