

## POWERFIT SINGLE POLE CONNECTOR

400A

### PANEL DRAIN

# KUPO®

#### Features

- \* Brass contact with silver plating ensures excellent conductivity
- \* Ergonomic rubber grip enhances handling comfort and safety
- \* Durable thermoplastic body offers superior impact resistance and electrical insulation
- \* O-ring provides an excellent protection against water and dust ingress after mating



**Item Number:** PFPD-3GY

Phase: Line 3

Color: Gray

Type: Threaded post



Type Approved  
Safety  
Regular Production  
Surveillance

www.tuv.com  
ID 1111303479

#### Material Information

Connector Body: Non-conductive high impact-resistant thermoplastic

Contact Material: Brass (silver-plated)

O-Ring: Silicone

Nut & Washer: Brass

#### Electrical Information

Amperage Rating: 400A Maximum

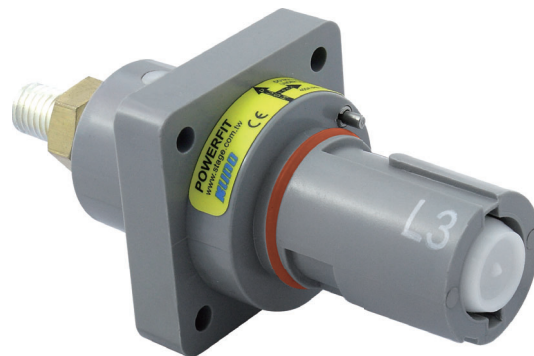
Voltage Rating: 1000V AC, 1500V DC Maximum

Test Voltage: 4500V AC

Short Circuit Rating: Up to 35.5kA

Insulation Resistance: > 5000M Ohms at 500V AC

Contact Resistance: 0.1m Ohms



#### Mechanical Information

Contact Type: M12 threaded post

Nut Torque: Maximum 12-14 N/meter

Connection Type: Push-and-twist

Mating Cycle: 500

#### Environmental Information

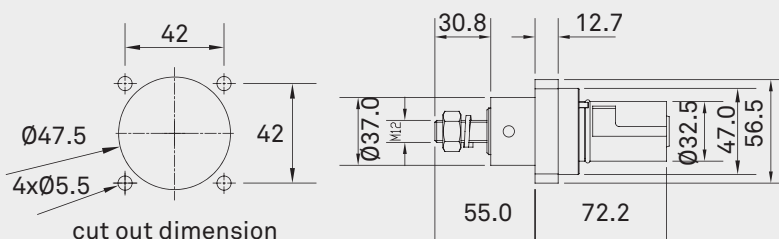
Ingress Protection: IP67 rating while mated

Flammability: UL94-V0 (body material rating)

Working Temperature: 45 to 85 Celsius Degree

Certifications: TÜV, CE, RoHS and REACH compliant

#### Dimensions



unit : mm

- Specifications subject to change without notice.
- [www.stage.com.tw](http://www.stage.com.tw)

2026 V1