

K-LOK SINGLE POLE CONNECTOR

400A, 600V AC/DC

RECEPTACLE MALE

KUPO[®]

Item Number: KL-400SMB

Color: Blue

Description: 400A K-LOK panel male, stud type



Listings

UL and cUL Listed file number E332947

Environment Rating: UL enclosure types 3R

Flame Class: HB / UL94

Material Information

Base Compound: Santoprene TPV

Temperature Rating: up to 105°C

Contact Material: Brass

Electrical Information

Amperage Rating: 400A Maximum

Voltage Rating: 600V AC/DC Maximum

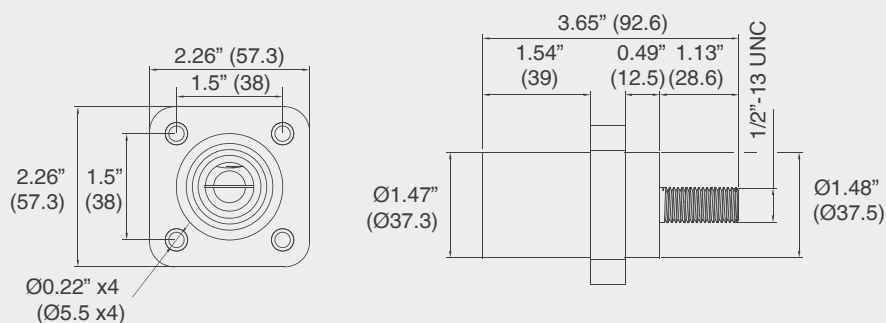
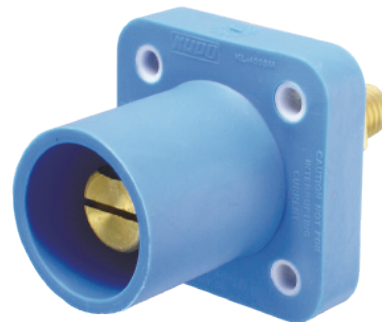
Mechanical Information

Terminal Accommodation: #6 to 4/0 AWG

Connection type:

1/2"-13 UNC threaded stud, length 1.126" (28.6mm)

Mounting Hole: 4 x Ø7/32"



unit: inches (mm)

- Specifications subject to change without notice.
- www.stage.com.tw