

## K-LOK SINGLE POLE CONNECTOR

400A, 600V AC/DC

### RECEPTACLE FEMALE

# KUPO<sup>®</sup>

**Item Number:** KL-400SFY

**Color:** Yellow

**Description:** 400A K-LOK panel female, stud type



#### Listings

UL and cUL Listed file number E332947

Environment Rating: UL enclosure types 3R

Flame Class: HB / UL94

#### Material Information

Base Compound: Santoprene TPV

Temperature Rating: up to 105°C

Contact Material: Brass

#### Electrical Information

Amperage Rating: 400A Maximum

Voltage Rating: 600V AC/DC Maximum

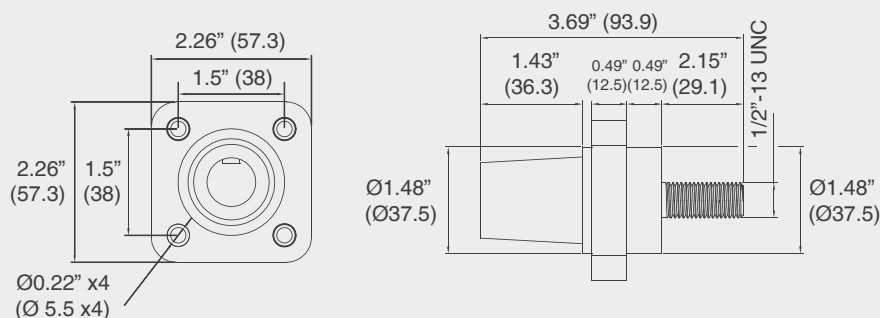
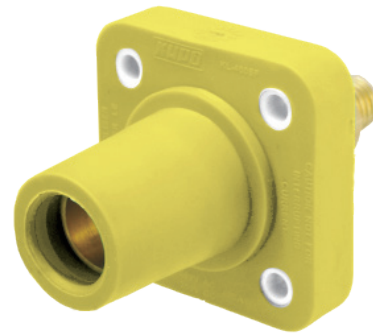
#### Mechanical Information

Terminal Accommodation: #6 to 4/0 AWG

Connection type:

1/2"-13 UNC threaded stud, length 1.146" (29.1mm)

Mounting Hole: 4 x Ø7/32"



unit: inches (mm)

- Specifications subject to change without notice.
- [www.stage.com.tw](http://www.stage.com.tw)