

K-LOK SINGLE POLE CONNECTOR  
150A, 600V AC/DC  
**RECEPTACLE FEMALE**



**Item Number:** KL-150SFB  
**Color:** Blue  
**Description:** 150A K-LOK panel female, stud type

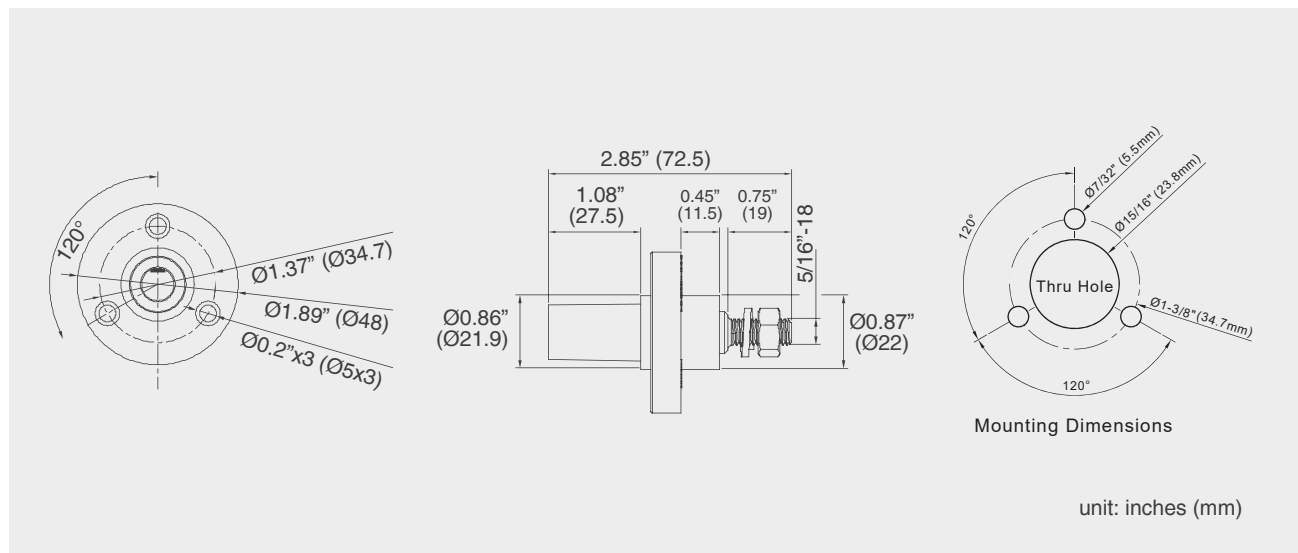
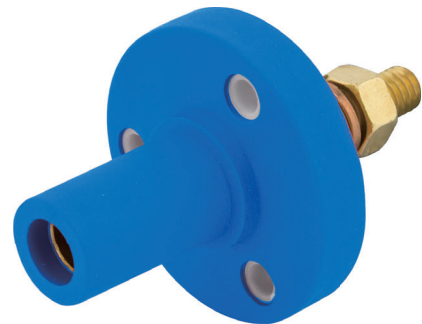


**Listings**  
UL and cUL Listed file number E332947  
Environment Rating: UL enclosure types 3R  
Flame Class: HB / UL94

**Material Information**  
Base Compound: Santoprene TPV  
Temperature Rating: up to 105°C  
Contact Material: Brass

**Electrical Information**  
Amperage Rating: 150A Maximum  
Voltage Rating: 600V AC/DC Maximum

**Mechanical Information**  
Terminal Accommodation: #8 to #2 AWG  
Connection type:  
5/16"-18 threaded stud, length 0.75" (19mm)  
Mounting Hole: 3 x Ø13/64"



- Specifications subject to change without notice.
- [www.stage.com.tw](http://www.stage.com.tw)